



Skagen

Port info



PORT OF SKAGEN
MARITIME BUSINESS HUB OF SCANDINAVIA



General information

Located at the top of Denmark, Port of Skagen is Denmark's northernmost cruise port and at the same time the largest fishing port in Denmark and a very popular yachting port.

Port of Skagen is a perfect stopover between Copenhagen/ The Baltics and the Norwegian destinations.

CRUISE FACILITIES

Port of Skagen offers three cruise piers –

Krydstogtkajen – Pier 9 – Length 500 m allowing an LOA up to 400 m - water depth 12 m

Pier 10 – Length 190m allowing an LOA up to 220m - water depth 9m.

Godskajen – Pier 41 – length 295m allowing an LOA up to 300m. Water depth 13 m.

Port entrance of 200m.

Welcome facilities at all cruise piers holding information and guidance, lounge, restrooms, showroom, souvenir shop and FREE WIFI

Your port contacts:

Skagen Port Authority

Havnevagtvej 30

DK 9990 Skagen

Phone: +45 98 44 13 46

E-mail: sh@skagenhavn.dk

Web: www.portofskagen.com

WELCOME TO SKAGEN – ONE OF SCANDINAVIA'S TOP 5 DESTINATIONS



Country: Denmark

Position: 57° 43 'N, 10° 35 'E.

Language: Danish

Currency: Danish crowns.

Cruise Season: All year round.

Average temperatures: May 10.7° C – June 14.4° C – July 15.7° C

August 17.8° C – September 12.38° C.

Recommended Days: Monday-Saturday. Some shops are closed on Sundays.

Local Time: GMT+1

Summertime: Yes

Emergency telephone no: +45 112 Falck Rescue Service

Nearest Airport: Aalborg

Distance from Skagen: 100 km

Approach

Approach Port of Skagen: Follow the leading line to the breakwater.

The port is navigable day and night.

Pilotage: Pilot is not compulsory

Pilot boarding position: Port of Skagen P/B (57° 42,7' N, 10° 38,8' E) or Skagen 2 P/B (57° 44' N, 10° 46' E)

Booking: 24 hours prior to arrival via email.

Notice: 2 hours prior to arrival via phone.

Working VHF Channel on arrival: 12 or 16.

Pilot Station: Skawpilot

Phone: +45 98 44 37 87.

Email: skawpilot@skawpilot.dk

Pilot Hours: 24 hours

Rates: Based on L x W x D

Prevailing Currents: Up to one knot.

Winds: Prevailing winds from west and south westerly directions

ETA to: Directly to port authorities or via ship's agent.

ETA needed: 36 hours prior to arrival. To be confirmed 4 hours prior to arrival.

Arrival

Arrival documentation via
SafeSeaNet

Berthing policy

Berth booking

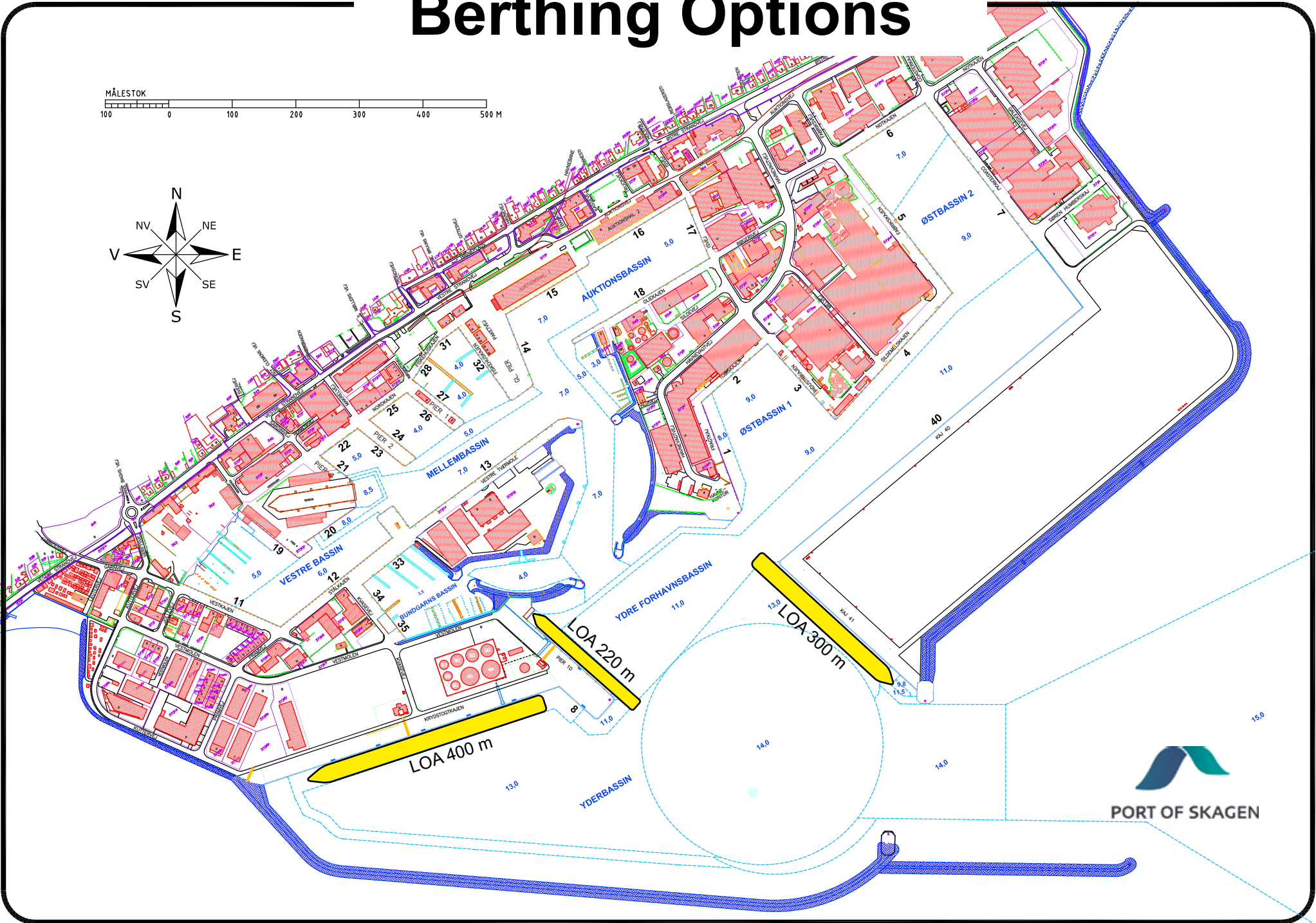
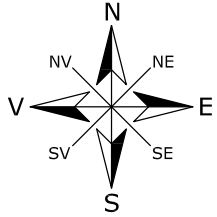
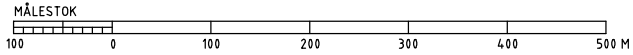
- Requests for reservation of berths should be sent by email to sh@portofskagen.com and info@cruiseskagen.dk by the cruise lines or ships agent.
- All requests will be confirmed as soon as berth availability has been checked.

Berth allocation

- Berth allocations will be offered at a first come first served-basis. Should two vessels wish to call at the same day Port of Skagen reserves the right to move the smallest ship regardless of the date of the booking.



Berthing Options



PORT OF SKAGEN

Berthing information

Cruise berths	Cruise Pier no. 9	Cruise Pier no. 10	Secondary Cruise Pier no. 41
Length of piers	500m	190m	295m
Type of piers	Mixed use facility	Mixed use facility	Mixed use facility
Max length of ships	400m	220m	300m
Min. depth alongside at MWL	12m	9m	13m - 9.5m
Max air draft	No limits	No limits	No limits
Height of piers at MWL	2.60m	2m	2.6m
Width of piers	30m	40m	30m
Special mooring required	No	Only if LOA exceeds 190m	Only if LOA exceeds 260m
Tidal movement/range	0.5m	0.5m	0.5m
Spacing between bollards	15m	18m	19.5m
SWL bollards	125t	50t	100t + 3 x storm bollards of each 150t
Type of fenders	Cone fender with fender shield 2.5x2.5m	Wood and rubber	Cone fender with fender shield 2.3x2.7m
Local gangways available	No	No	No
Can ship's gangways be used	Yes	Yes	Yes
Clean pier before arrival	Yes	Yes	Yes
ISPS certified	Port facility no.: DKSKA-0023	Port facility no.: DKSKA-0017	Port facility no.: DKSKA-0026
Distance to town centre	1.6 km	1.6 km	2 km
Time on foot	20 minutes	20 minutes	30 minutes
Tourism information at pier	Yes	Yes	Yes
City maps available at pier	Yes	Yes	Yes
Fixed sign/map at the pier with directions between pier and town	Yes	Yes	Yes
Free Wi-Fi at pier	Yes	Yes	No
Crew designated centre at pier	Yes	No	No

Taxi stand and general price guidance	Yes	Yes	Yes
Shuttle buses required	No, but recommended – Port of Skagen provides 1 complimentary shuttle bus per cruise ships calls for ships exceeding 15.000 GT	No, but recommended – Port of Skagen provides 1 complimentary shuttle bus per cruise ships calls for ships exceeding 15.000 GT	No, but recommended – Port of Skagen provides 1 complimentary shuttle bus per cruise ships calls for ships exceeding 15.000 GT
Restrooms at pier also for handicapped	Yes	Yes	Yes
Space for tour buses at pier	Yes	Yes	Yes
Nearest ATM	1.6 km	1.6 km	2 km
Nearest bank	1.6 km	1.6 km	2 km
Post office at pier	For letters yes. For packages 1.8 km	For letters yes. For packages 1.8 km	For letters yes. For packages 1.8 km
Distance to nearest airport	100 km	100 km	100km
Public transport – train	2 km	2 km	2.5km



Tugs and linesmen available – (not compulsory)

- Service: 24 hours
- A number of local tugs with up to 23,5 ton bollard pull available on request.
- Larger tugs from nearby ports available with a notice (Typical minimum 12 hours).
- Bollard pull: 7.5 BP, 18 BP and 23,5 BP
- Ship or tug lines: Ship's lines.
- Booking: At the earliest convenient time.
- Notice: Local tugs – 4 hours prior to arrival. Others – min. 12 hours prior to arrival – due to mobilisation.
- Rates: Based on L x B x D
- Port Officials hours: 24
- Customs Officials hours: 24
- Arrival/departure time restrictions: No

Services

All fees/costs are subject to revision and inflation indexation

Garbage information

Dry garbage facility: Yes

Wet garbage facility: Yes

Can barges come alongside: Yes – charge not included

Container sizes: Up to 2 x10 m³ by request or directly to garbage truck
For cruise vessels up to 80.000 GT it is possible to discharge 10m³ of general waste free of charge.

For cruise vessels above 80.000 GT it is possible to discharge 20m³ of general waste free of charge

Garbage taken to incinerator (waste - to - energy) or recycling

Sludge disposal: Yes

Engine slop: Limited quantities can be received free of charge.

Notice about discharge of garbage, waste oil, sewage and scrubber water must be given minimum 24 hours prior to arrival on weekdays and 48 hours on holidays and weekends.

Emptying of 10m³ tipping container for combustible waste, including dues DKK 2.000 per emptying.

Pick up of combustible waste directly at the ship, is invoiced at cost price from recycling station + 15% handling fee.

Garbage truck waiting time will be invoiced at cost + 15% handling fee!

Fresh water

Fresh water: In port – delivered from pier by shore hoses.

Number of hoses: Several

Fitting types:

2” or 4” Storz connections (Cruise Pier 9)

2” Storz connections (Cruise Pier 10)

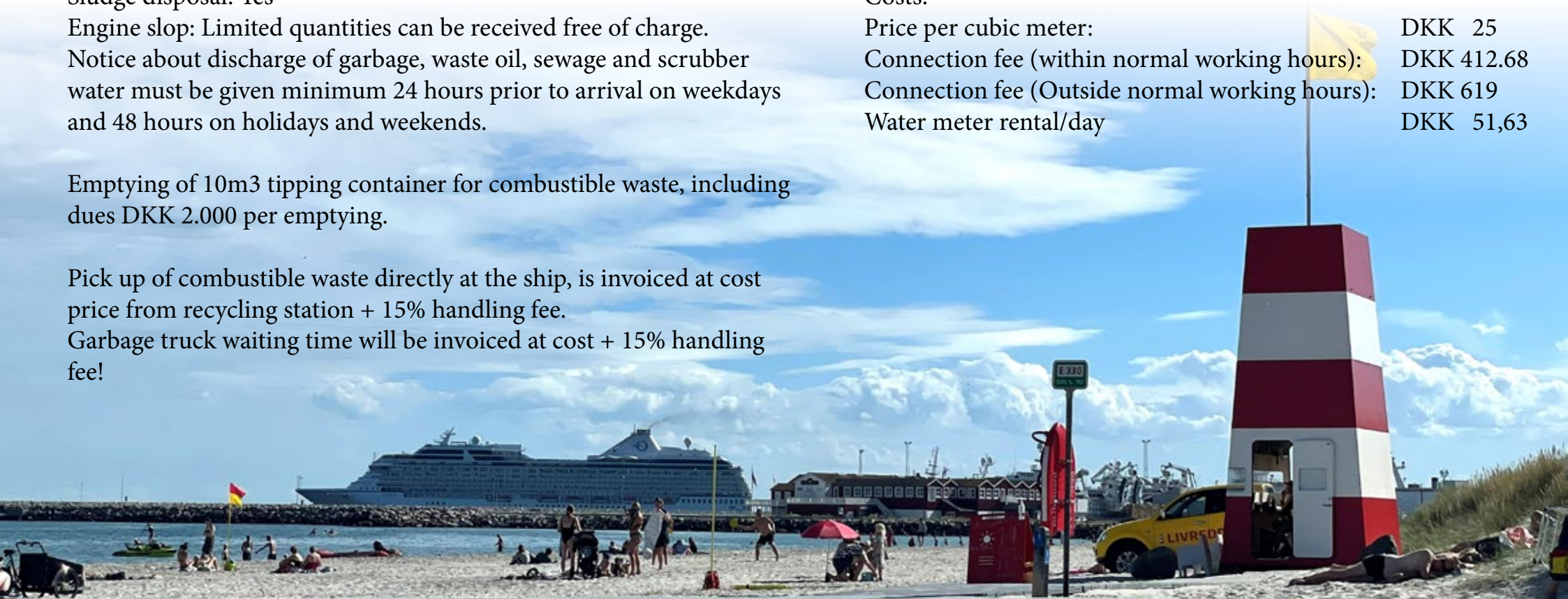
2” or 4” Storz connections (Cruise Pier 41)

One connection capacity up to 65 cbm/hour

Two connections capacity up to 100 cbm/hour

Costs:

Price per cubic meter:	DKK 25
Connection fee (within normal working hours):	DKK 412.68
Connection fee (Outside normal working hours):	DKK 619
Water meter rental/day	DKK 51,63



Services

PRF for sewage - Black and greywater

Port of Skagen has established stationery PRF for sewage – Blackwater and Greywater.

The facility has 6 shore connections at Cruise Pier no. 9 and 2 shore connections at Cruise Pier no. 10 with direct discharge to the municipal sewage system via a 800 cbm tank.

Capacity: approx. 200 cbm/hour
Max capacity per cruise call: 800 cbm

Criteria for reception of sewage – Sewage shall be pumped ashore by means of the ship's own pumps.

Price per cbm: DKK 50

Connection fee: DKK 1.000

Standard dimensions of flanges for discharge connections

Description	Dimension
Outside diameter	210 mm
Inner diameter	According to pipe outside diameter
Bolt circle diameter	170 mm
Slots in flange	4 holes, 18 mm in diameter, equidistantly placed on a bolt circle of the above diameter, slotted to the flange periphery. The slot width to be 18 mm
Flange thickness	16 mm
Bolts and nuts: quantity and diameter	4, each of 16 mm in diameter and of suitable length

The flange is designed to accept pipes up to a maximum internal diameter of 100 mm and shall be of steel or other equivalent material having a flat face. This flange, together with a suitable gasket, shall be suitable for a service pressure of 6 kg/cm².

Discharge of sewage at Cruise Pier 41 is possible by road tankers. For prices, please contact Port of Skagen - Deputy director/COO Mikal Nielsen on email. mn@skagenhavn.dk , tel. +45 26 78 32 33.

Scrubber waste water

Waste water from exhaust gas scrubber systems (EGCS) is received.

Prices depends on the quantity and characteristic of the scrubber waste water.

Is accepted and invoiced according to the cost price from the recycling station +15% handling fee.

All prices are subject to revision and inflation indexation.

Bunkering options in Skagen

Bunker One can supply different types of MGO and HFO – either by barge or via two ex-pipe connections along the cruise pier.

Harbour Dues – Port of Skagen

NB – The prices indicated in the following refer exclusively to cruise ship calls with passengers allowed to disembark. Information on conditions regarding technical calls please contact Deputy director/COO Mikal Nielsen on email. mn@skagenhavn.dk , tel. +45 26 78 32 33.

For 2024 and 2025 Port of Skagen offers the following rates and discounts.

Rates for Port of Skagen:

2024 – Berthing: DKK 2.85 /GT per calendar day

2025 – Berthing: DKK 2.85 /GT per calendar day

From 2024 – Calls exceeding one calendar day will be invoiced an additional fee of DKK 0.8/GT per extra calendar day

Discount rates for fourth call or more by the same vessel:

2024 – Berthing: DKK 1.85 /GT per calendar day

2025 – Berthing: DKK 1.85 /GT per calendar day

From 2024 – Calls exceeding one calendar day will be invoiced an additional fee of DKK 0.8/GT per extra calendar day

ISPS fee per calendar day: DKK 0.26 /GT – Max fee per calendar day: DKK 17.000

Passenger fee: DKK 2 /Passenger per call.

Security

Port facility ISPS compliant: Port ID no.: DKSKA

Port facility Security Officer Tel: +45 98 44 13 46

Shoreside security personnel: Gates are always manned with security personnel (Included in the ISPS fee).

Baggage XRAY facilities: No

Pier no. 10 – Port facility no: DKSKA-0017

Pier no. 9 – Port facility no: DKSKA-0023

Pier no. 41 – Port facility no: DKSKA-0026



Distances from Port of Skagen to:

Oslo	135 NM
Kristianssand	97 NM
Gøteborg	46 NM
København	140 NM
Southampton	647 NM
Dover	536 NM